



Optimizing the WAN infrastructure

Industry segment – Manufacturing (FMCG)



The customer is largest FMCG manufacturer in India



Solution Objectives

- Bandwidth capacity scaling of backend infrastructure
- Accelerate mission critical applications like DR, SAP and Mailing
- Enforce QoS
- Traffic monitoring and capacity planning
- High Availability



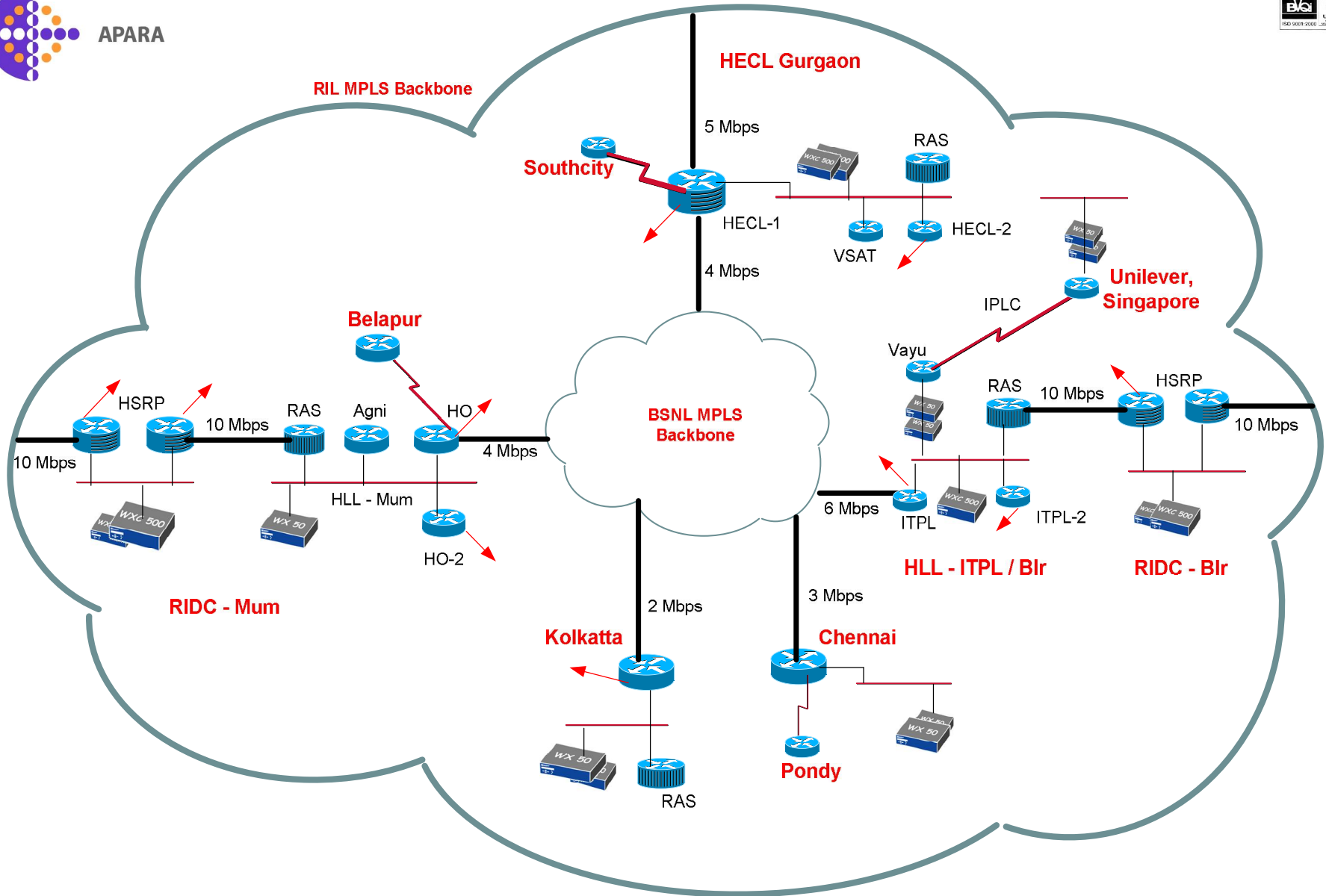
Challenges

- Customer has a collapsed backbone interconnecting 200+ locations using dual MPLS clouds from two service providers.
- Traffic redirection from multiple gateway routers to WXC units in HA with PIM configuration
- Tracking the failure of WXC units in HA mode and for seamless traffic redirection and restoring back to normalcy at stand-alone locations with single units
- Integrating with the MPLS backbone for traffic engineering
- Project Management and planning for seamless integration of units at all locations



Solution Highlights

- MSR/NSM combination for compression to scale bandwidth
- Application Flow acceleration as well as Packet Flow Acceleration for enhancing application performance
- Enforce QoS policies – Prioritization (DSCP) and Bandwidth guarantees for SAP, DR and Mailing applications
- Traffic flow monitoring for capacity planning
- HA mode operations for better uptimes
- Successfully used Cisco's object tracking feature to fail-over between the HA pairs as well as stand-alone units



Architecture Blue Print



Solution Benefits

- Maximized ROI in scaling WAN capacity
- Enhanced QoS
- Improved application performance and DR
- Better visibility and capacity planning